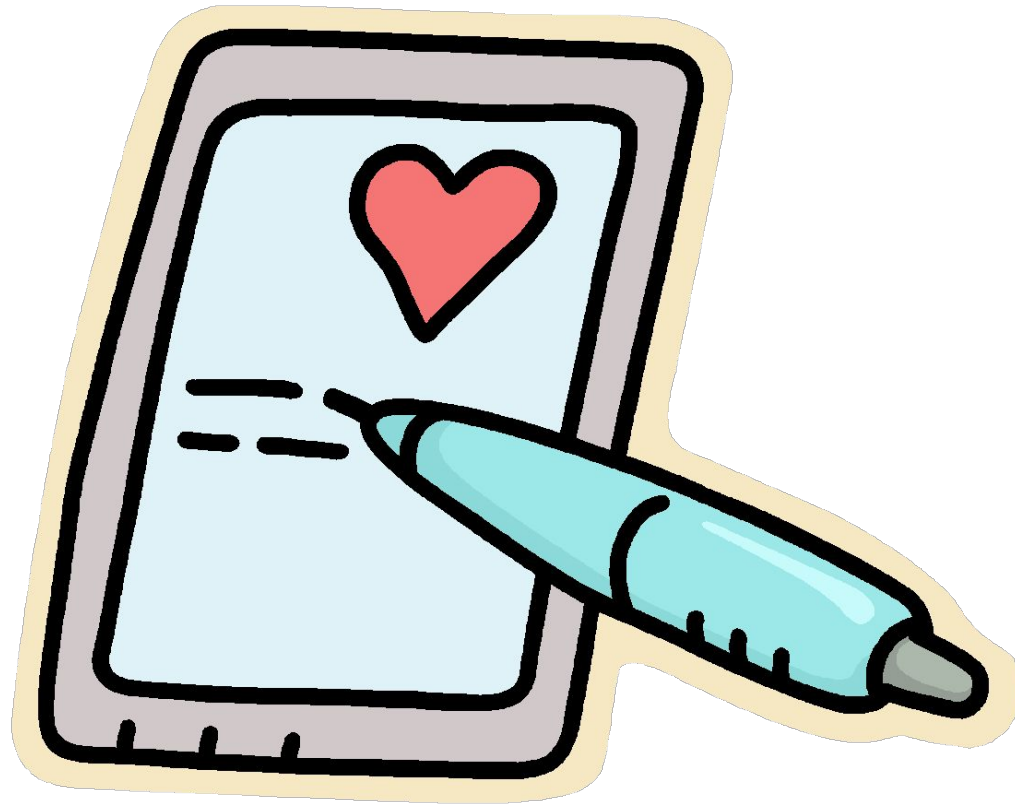
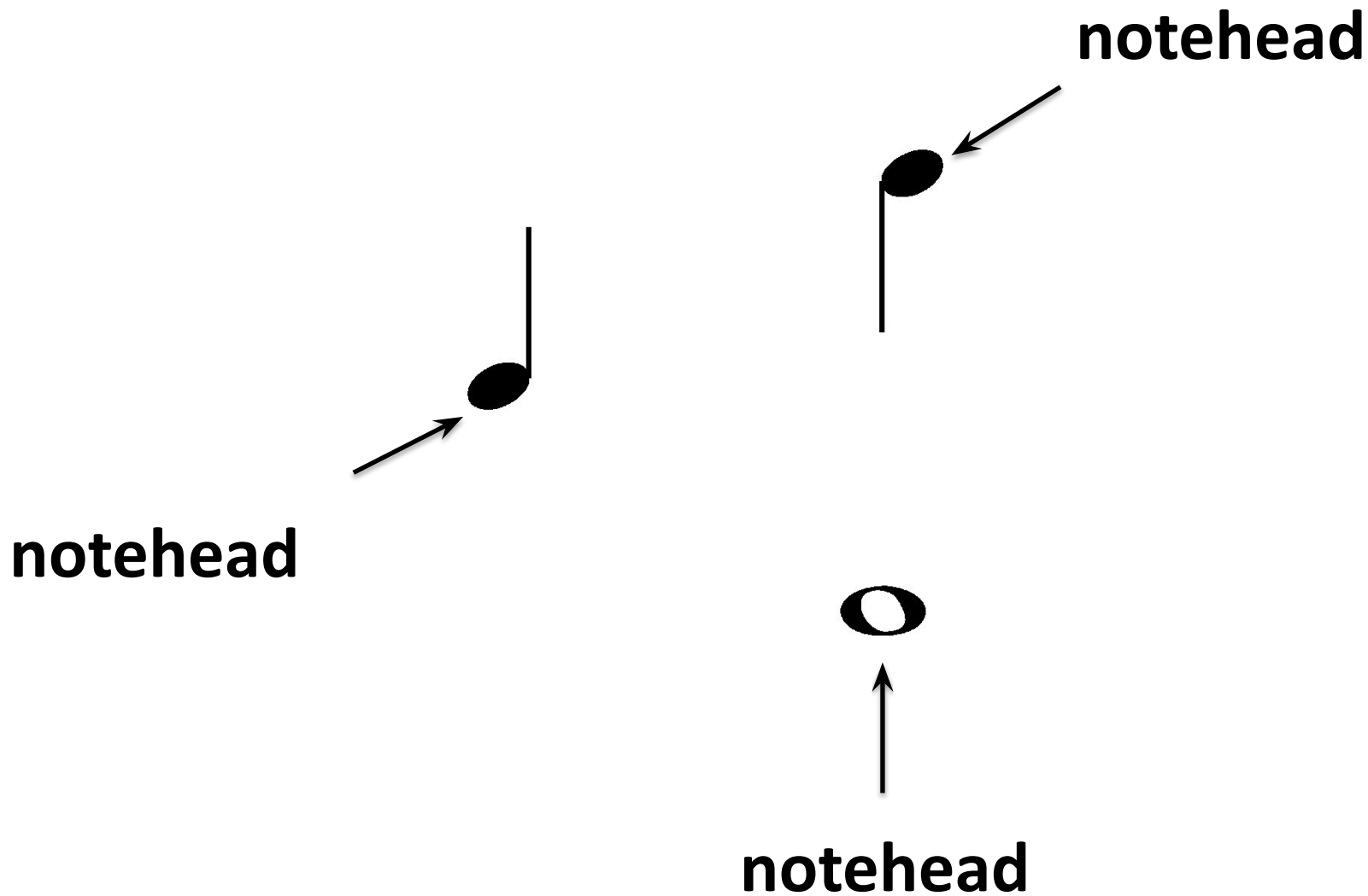


Notation is about how pitch is written



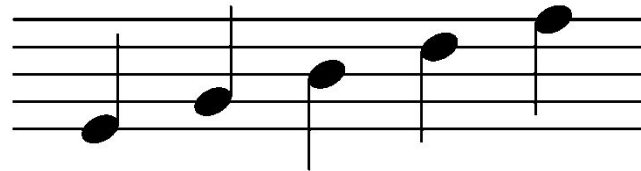
Noteheads



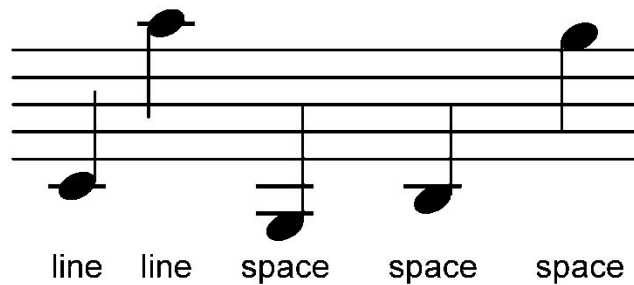
Here are the note heads on the spaces:



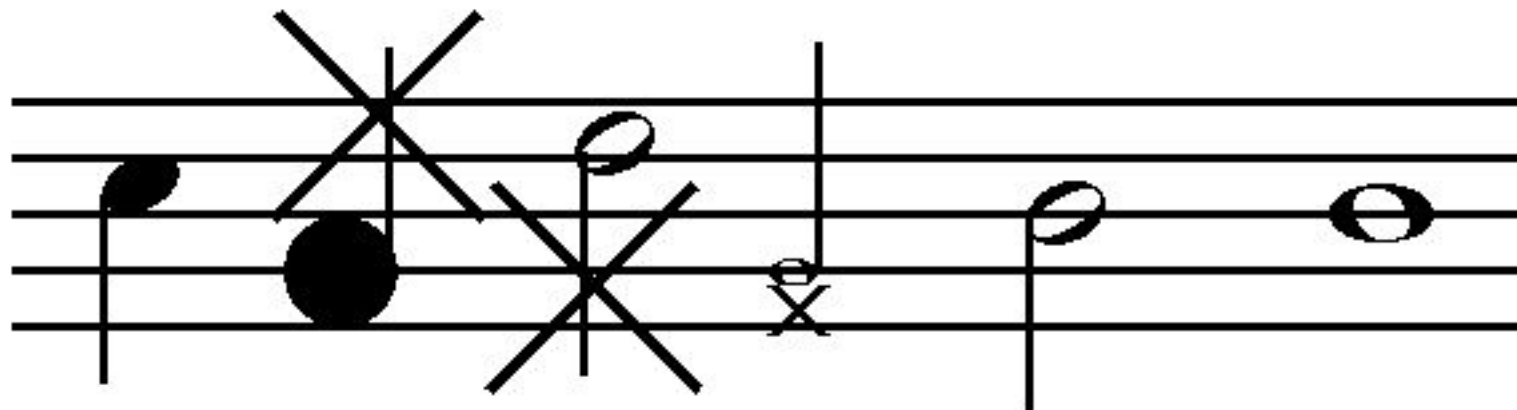
Here are the note heads on the lines:



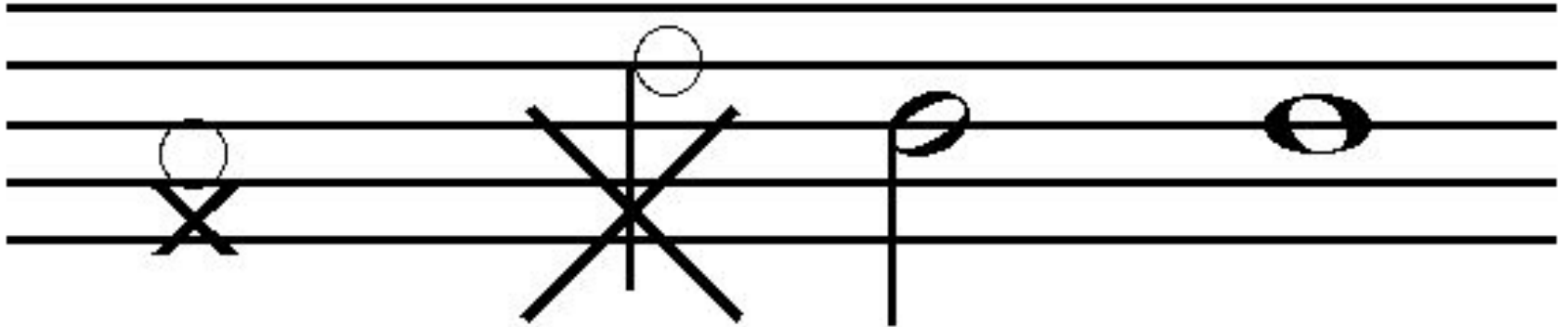
ledger lines:



- Noteheads should be as tall as one space, noteheads must remain within their boundaries

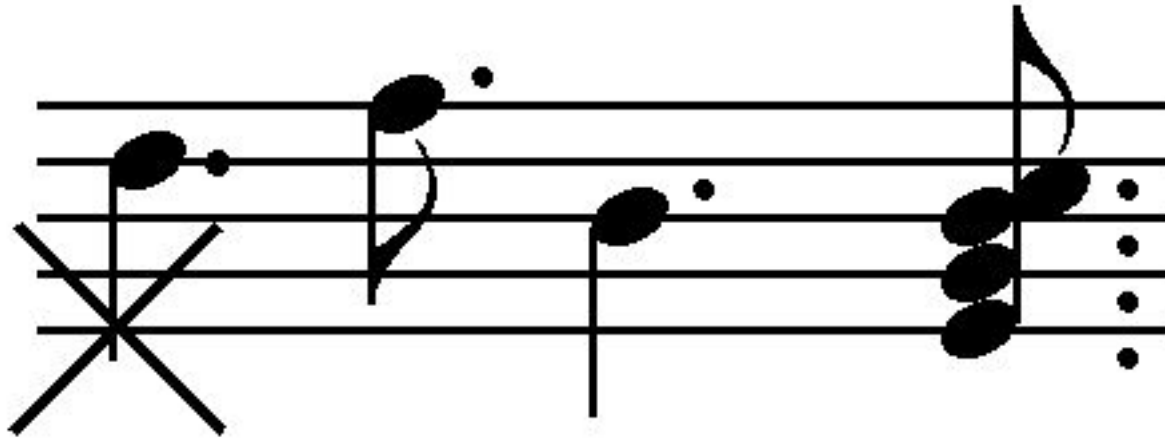


- Noteheads should be oval and slightly slanted



- Whole notes are oval but do not slant

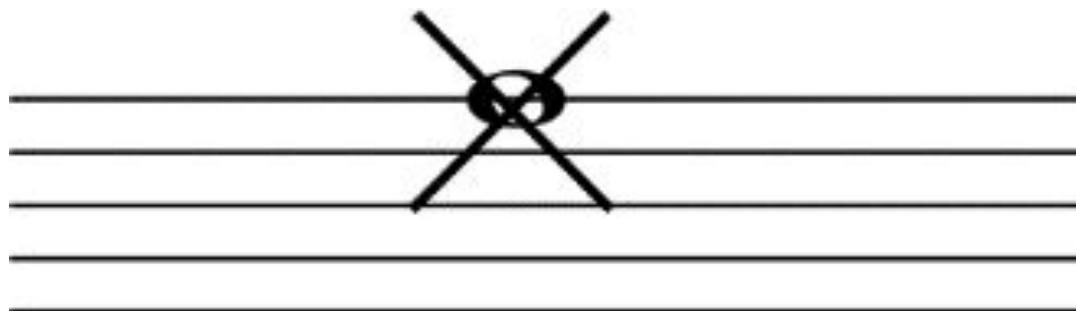
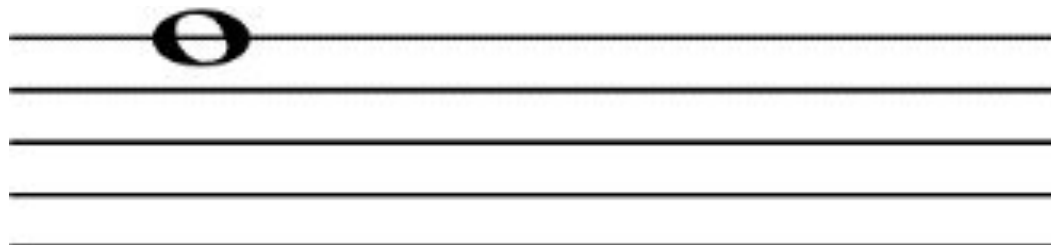
- Dots are never placed on a staff line



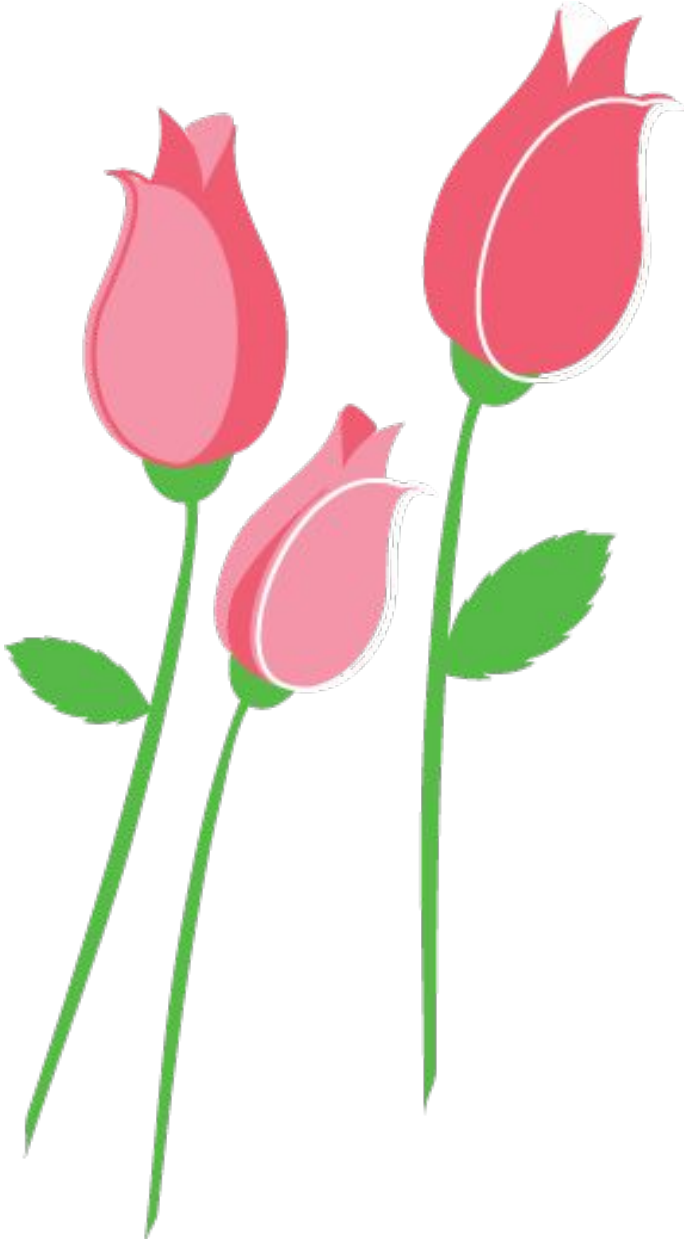
- Space noteheads so they clarify beats



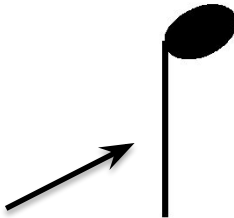
- Whole Notes Line up with the first beat of the measure



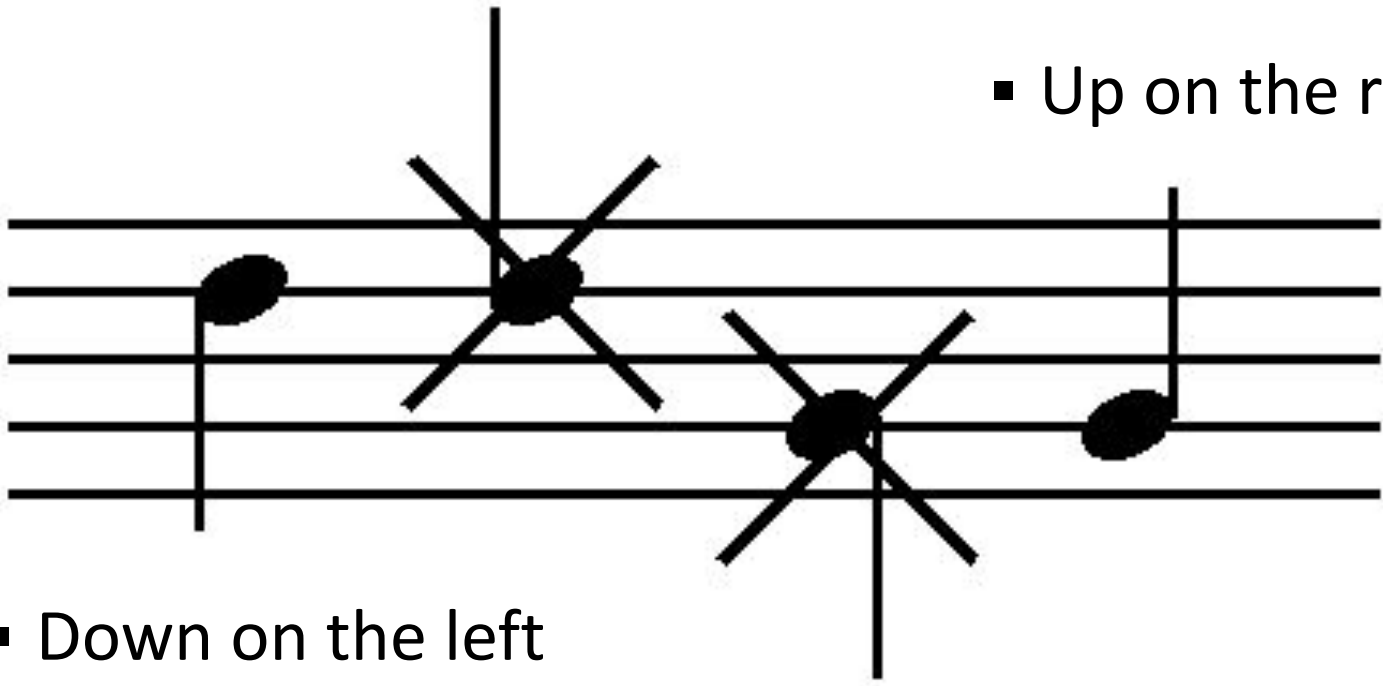
STEMS



STEMS



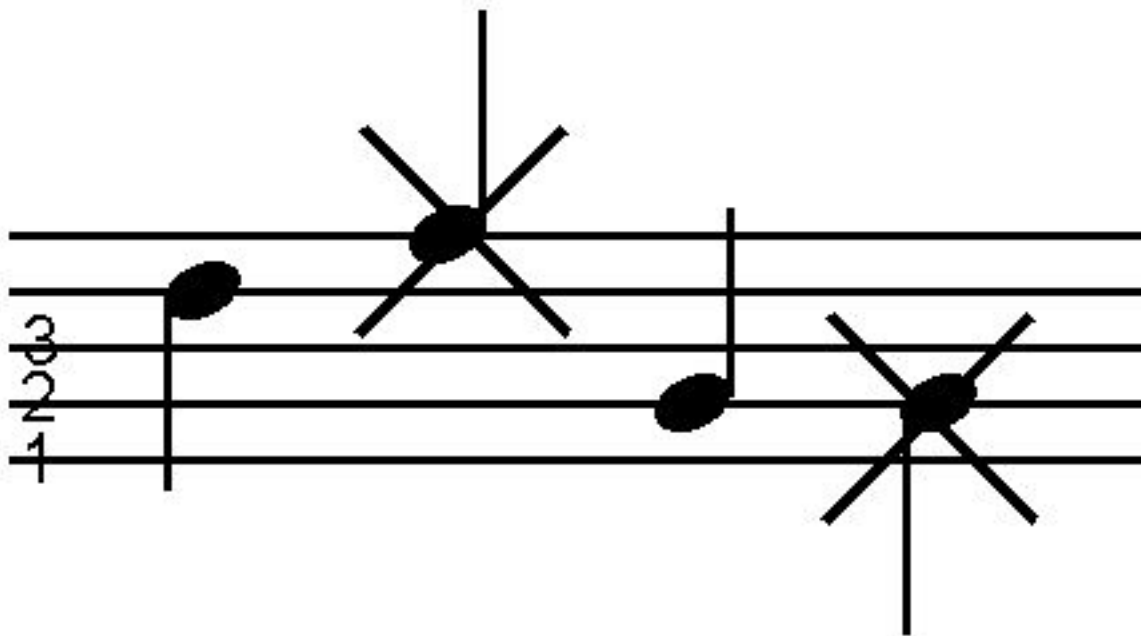
stem



▪ Up on the right

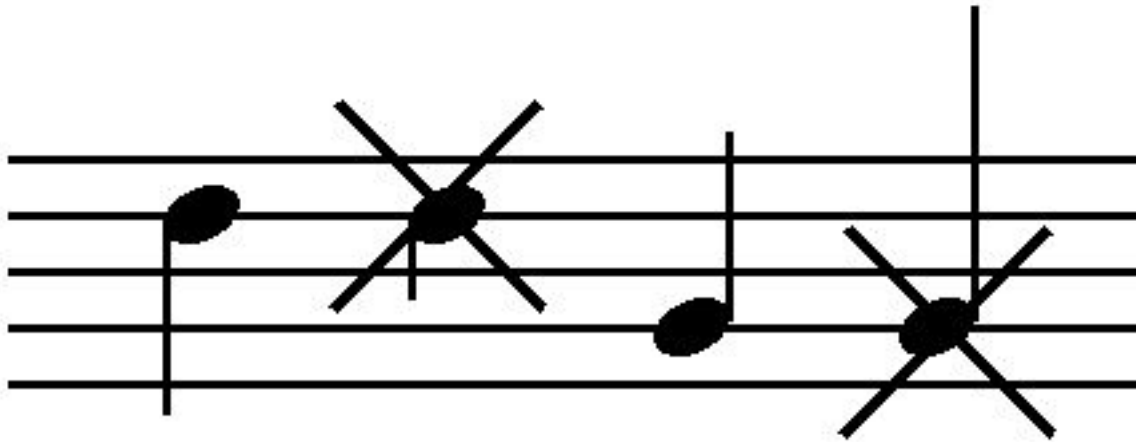
▪ Down on the left

- Above the third staff line stems go down

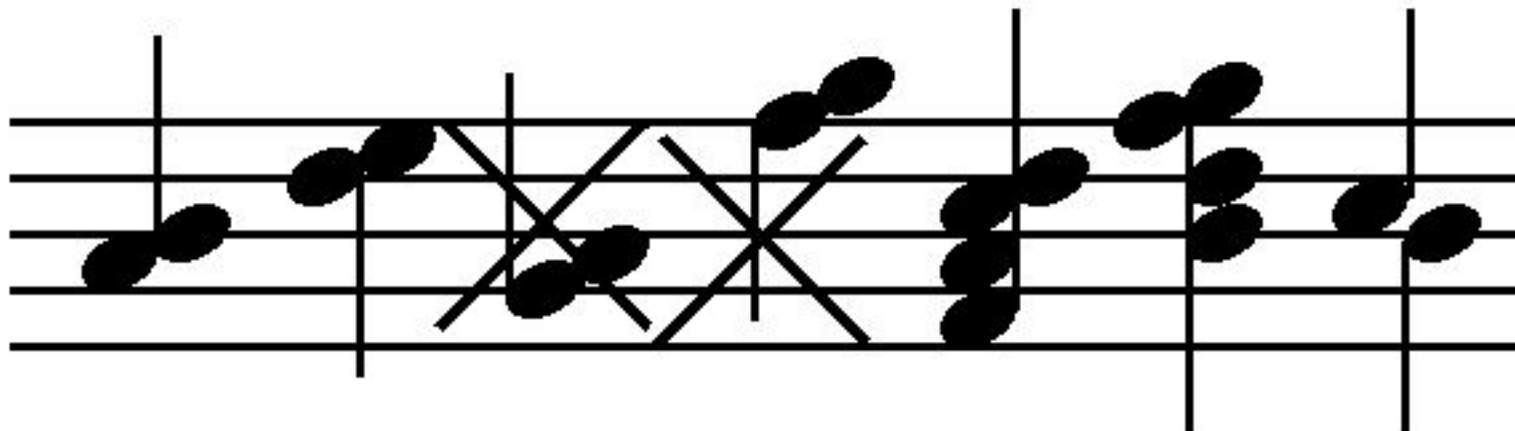


- Below the third staff line stems go up

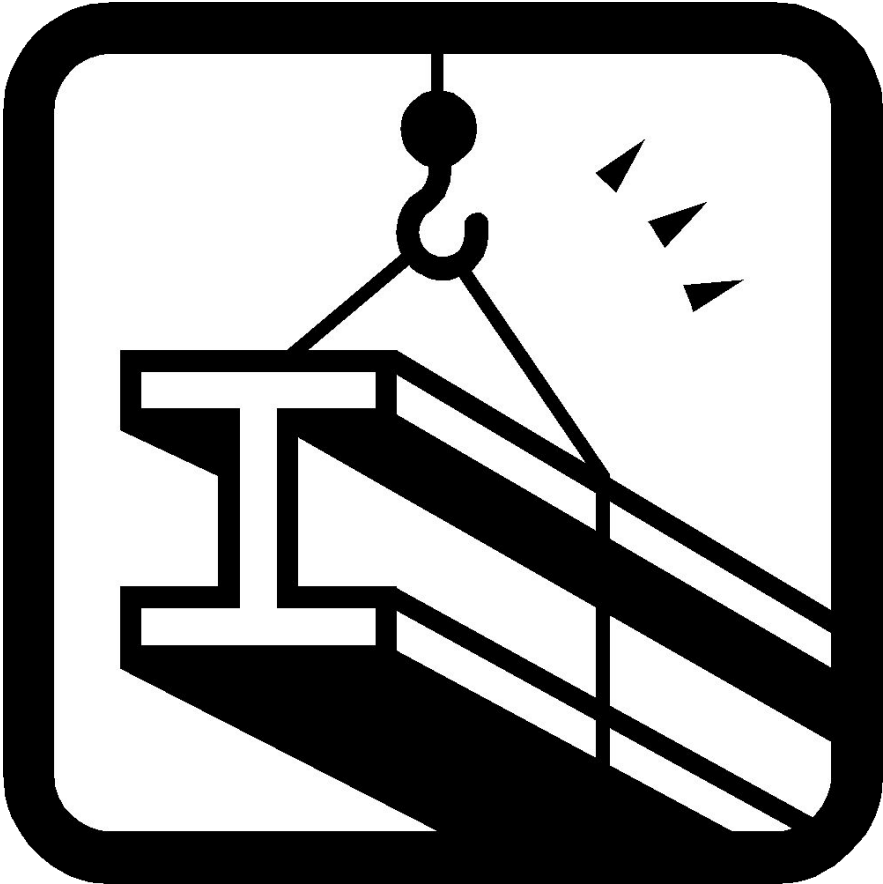
- Stem length is usually an octave



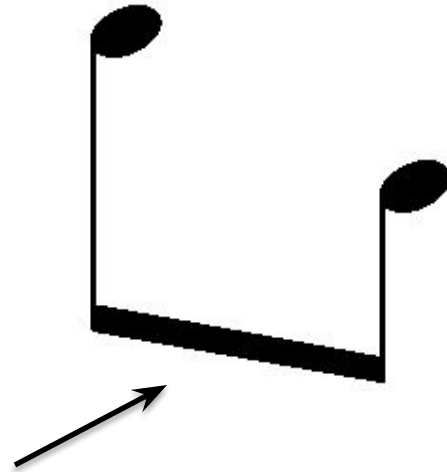
- When notating pitches that are 2nds the higher pitch goes on the right (2nds are notes immediately on top of or below each other)



BEAMS

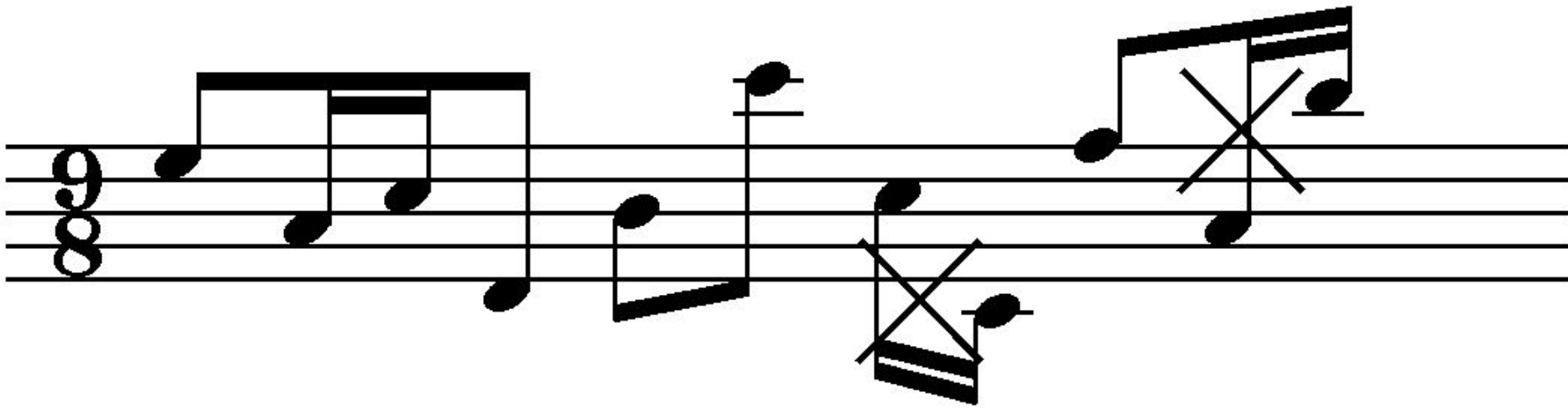


BEAM

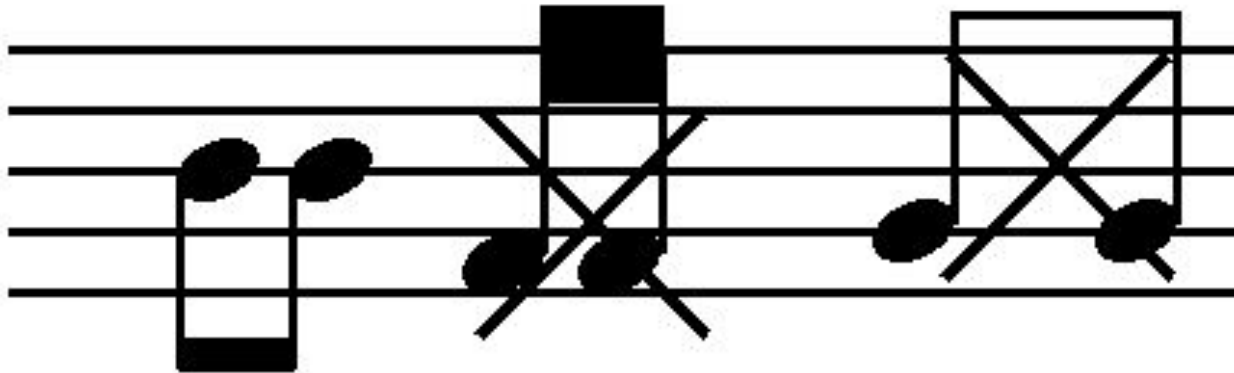


BEAM

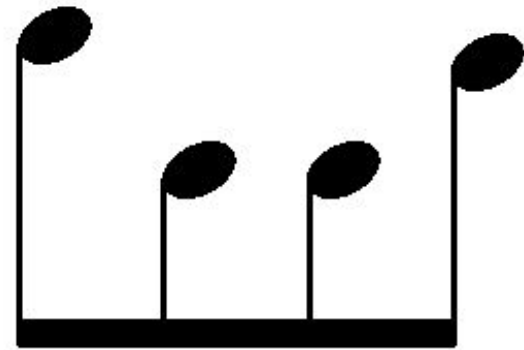
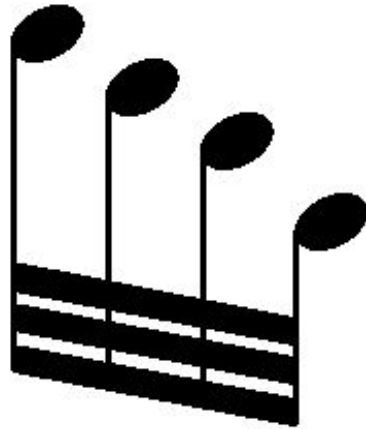
- Beamed stems go up or down based on the note farthest from the middle line
- You can suspend the stem length rule for beaming



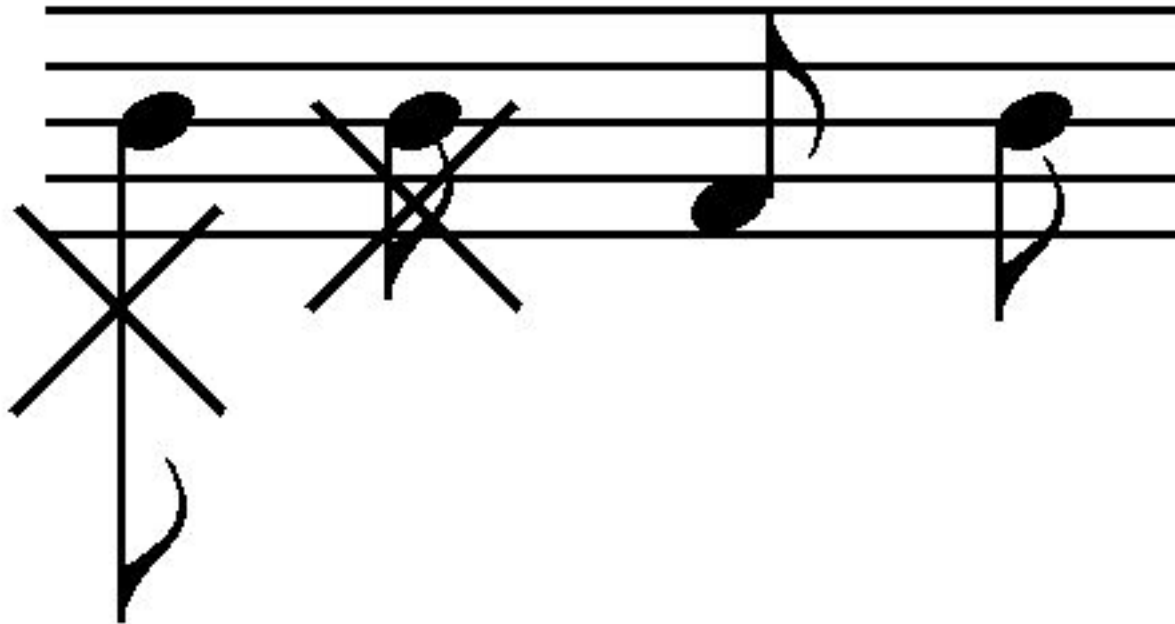
- Beams should be twice the thickness of stems



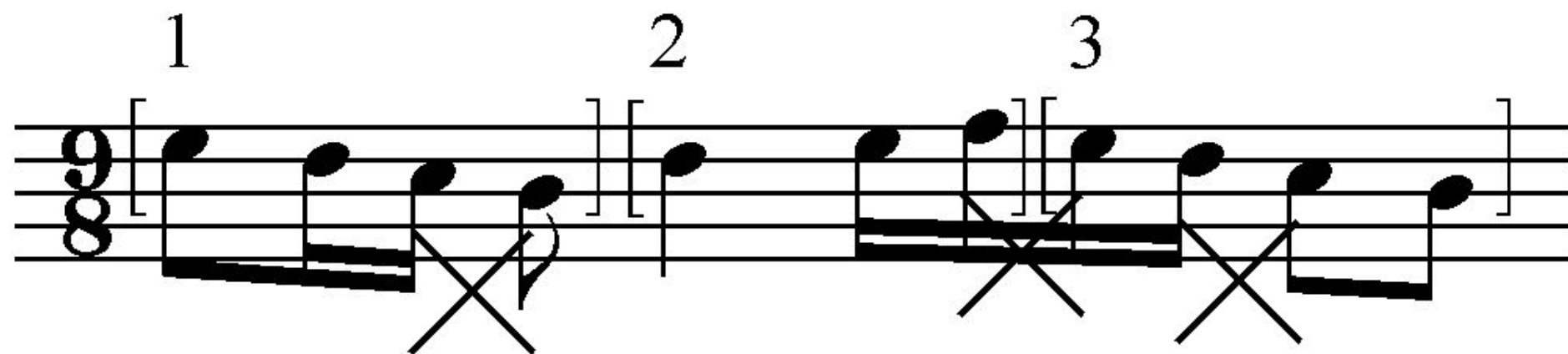
- Beams should slant slightly if the notes ascend or descend



- Notes with flags should not have extra short or extra long stems



- Beam notes according to the macro beat



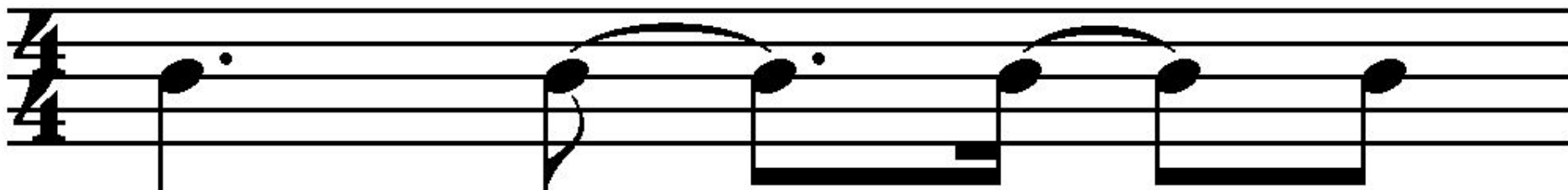
- Group flags and beams according to the macro beat - use ties if necessary

1

2

3

4

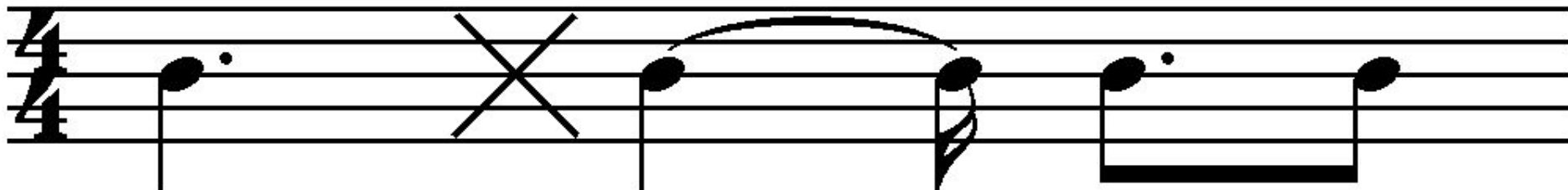


1

2

3

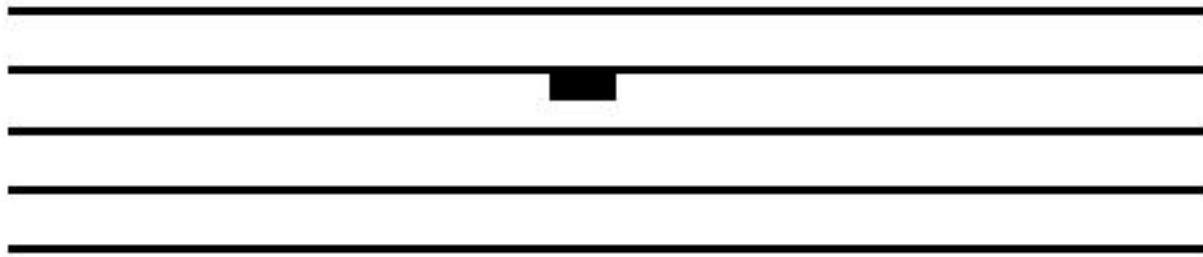
4



- Rests

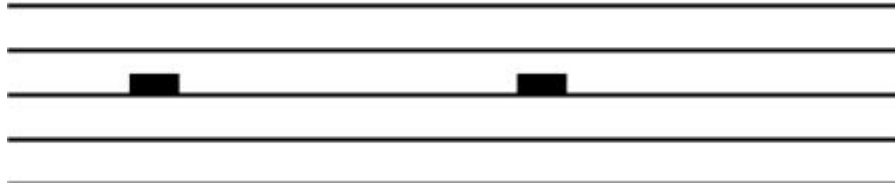


- Whole rests are placed in the middle of the measure and hang from the 4th line



- Space all other rests so they clarify beats

- Half rests sit on the 3rd line
- And are spaced according to the beat



- Quarter rests are centered on the third line



- The flag of an 8th Rest is just above the 3rd line



- The flags of a 16th rest are on either side of the 3rd line



- The 32nd rest is centered on the staff

